

HvG-Display 20mm LED

- Display with 20mm digits for home applications or visualisations in smaller rooms.
- Display of the most important values:
Power Output, Total Energy and Avoided CO₂.
(further values upon request)
- Available for indoor-(IP20) and outdoorapplications(IP65).
- Nice looking case with silver frame, also available with powdercoating or painting in any colour.
- BasicLine-Version (IP20, indoor application) gets delivered with 6 different front-layouts, which can be changed very easily like in a picture frame.

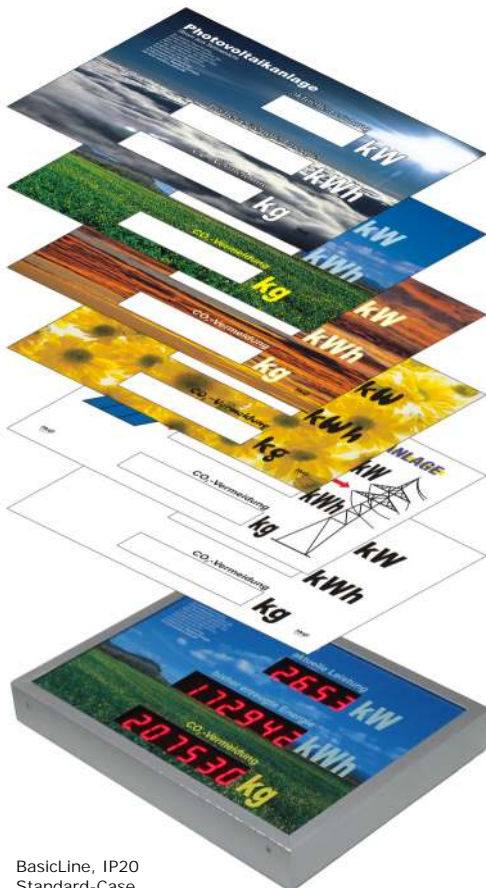


BasicLine, IP20, Standard-Case



ProLine, IP65, Standard-Case

- 20mm LED-Digits with seven-segment-technology with high contrast and sharp outline. Reading distance up to 10m.
- Display-parameter-setting with HvG **easyControl** - Software.
- Easy installation and configuration.



BasicLine, IP20
Standard-Case

- Own layouts can be produced on every printer, because the layout-size is exactly A4. Empty drafts can be downloaded at the internet from www.hvg.me.

Technical-Data

	BasicLine	BasicLineS	ProLine
Display-Type	LED, red	LED, red	LED, red
Digit Height	20mm	20mm	20mm
Electrical Connection	230V, 50Hz plugin-supply	230V, 50Hz int. supply	230V, 50Hz int. supply
Power Consumption typ.	appr. 3 W	appr. 3 W	appr. 3 W
CE-Conformity	•	•	•
Displayable Values			
Power Output	•	•	•
Total Energy	•	•	•
CO ₂ -Avoided	•	•	•
(further values upon request)	•	•	•
Interfaces			
RS 232	•	•	•
RS 485	•	•	•
So (Pulse Input)	•	•	•
Ethernet/LAN	optional	optional	optional
Wireless (433MHz)	optional	optional	optional
Case Material	Aluminium/ Plastic	Aluminium/ Plastic	Aluminium/ Plastic
Protection Class	IP20 Indoor-Use	IP20/65 Indoor-Use/ Outdoor-Use	IP65 Outdoor-Use
incl. 6 Frontlayouts incl. 1 fixed Layout	• <small>exchangeable at Standard-Case</small>	•	•
Dimensions [mm]			
Standard-Case	305x218x37	305x218x55	356x272x65
XL-Case	500x300x37	500x300x55	500x300x65

Sales:

HvG
Hard & Software
Engineering

HvG-Display 38mm LED

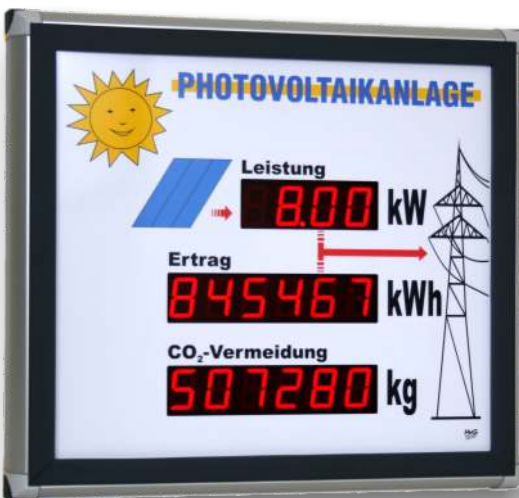
- LED-Display with 38mm digits.
- Display of the most important values:
Power Output, Total Energy and Avoided CO₂. (further values upon request)
- Frontlayouts can be chosen. Either available with one of our standard layouts or with an individual, customised layout without extra charge.
- Nice looking case with silver frame, also available with powdercoating or painting in any colour.



BasicLineS, IP20/IP65, Standard-Case

- Available for indoor-(IP20) and outdoorapplications(IP65).
Choose between three different metal case versions.

Technical-Data



ProLine, IP65, Standard-Case

- 38mm LED-Digits with seven-segment-technology with high contrast and sharp outline. Reading distance up to 15m.
- Display-parameter-setting with HvG **easyControl** - Software (free download from www.hvg.me).
- Easy installation and configuration.

	BasicLineS	ProLine
Display-Type	LED, red	LED, red
Digit Height	38mm	38mm
Electrical Connection	230V, 50Hz int. supply	230V, 50Hz int. supply
Power Consumption typ.	appr. 5 W	appr. 5 W
CE-Conformity	•	•
Displayable Values		
Power Output	•	•
Total Energy	•	•
CO ₂ -Avoided	•	•
(further values upon request)	•	•
Interfaces		
RS 232	•	•
RS 485	•	•
So (Pulse Input)	•	•
Ethernet/LAN	optional	optional
Wireless (433MHz)	optional	optional
Case Material	Aluminium/ Plastic	Aluminium/ Plastic
Protection Class		
	IP20/65 <small>Indoor-Use/ Outdoor-Use</small>	IP65 <small>Outdoor-Use</small>
incl. Frontlayout	•	•
Dimensions [mm]		
Standard-Case	450x400x55	502x452x65
XL-Case	700x500x55	700x500x65



Shown in real size

38mm LED-Digit

Sales:

HvG[®]
Hard & Software
Engineering

HvG-Display 57mm LED

- LED-Display with 57mm digits.
- Display of the most important values:
Power Output, Total Energy and Avoided CO₂.
(further values upon request)
- Frontlayouts can be chosen. Either available with one of our standard layouts or with an individual, customised layout without extra charge.
- Nice looking case with silver frame, also available with powdercoating or painting in any colour.



BasicLine, IP20
3-line Version, Standard-Case



ProLine, IP65
2-line Version, Standard-Case

- 57mm LED-Digits with seven-segment-technology with high contrast and sharp outline. Reading distance up to 25m.
- Display-parameter-setting with HvG **easyControl** - Software
(free download from www.hvg.me).
- Easy installation and configuration.

- Available for indoor-(IP20) and outdoorapplications(IP65).
Choose between three different metal case versions.

Technical-Data

	BasicLine	BasicLineS	ProLine
Display-Type	LED, red	LED, red	LED, red
Digit Height	57mm	57mm	57mm
Electrical Connection	230V, 50Hz int. supply	230V, 50Hz int. supply	230V, 50Hz int. supply
Power Consumption typ.	appr. 10 W	appr. 10 W	appr. 10 W
CE-Conformity	•	•	•
Displayable Values			
Power Output	•	•	•
Total Energy	•	•	•
CO ₂ -Avoided	•	•	•
(further values upon request)	•	•	•
Interfaces			
RS 232	•	•	•
RS 485	•	•	•
So (Pulse Input)	•	•	•
Ethernet/LAN	optional	optional	optional
Wireless (433MHz)	optional	optional	optional
Case Material	Aluminium/ Plastic	Aluminium/ Plastic	Aluminium/ Plastic
Protection Class	IP20 Indoor-Use	IP20/65 Indoor-Use/ Outdoor-Use	IP65 Outdoor-Use
incl. Frontlayout	•	•	•
Dimensions [mm]			
2-lines Standard-Case	515x365x100	515x365x55	576x426x100
2-lines XL-Case	700x500x100	700x500x55	700x500x100
3-lines Standard-Case	515x495x100	515x495x55	576x556x100
3-lines XL-Case	725x625x100	725x625x55	725x625x100



Shown in
real size

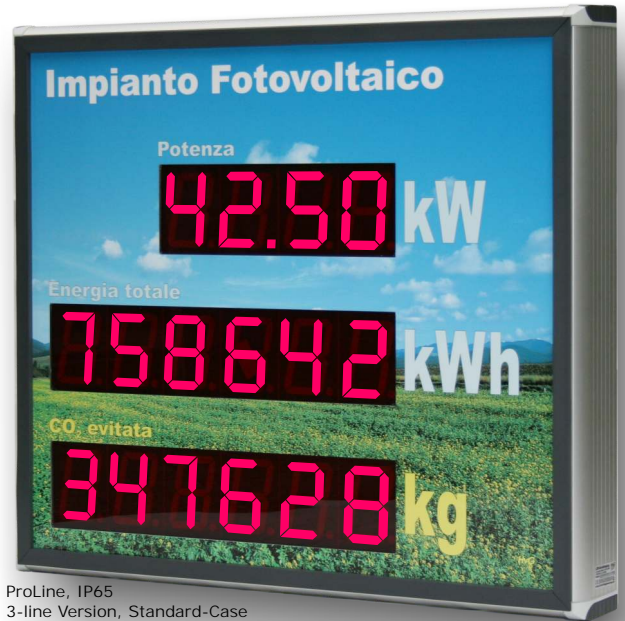
57mm LED-Digit

Sales:

HvG
Hard & Software
Engineering

HvG-Display 100mm LED

- LED-Display with 100mm digits.
- Display of the most important values:
Power Output, Total Energy and Avoided CO₂.
(further values upon request)
- Frontlayouts can be chosen. Either available with one of our standard layouts or with an individual, customised layout without extra charge.
- Nice looking case with silver frame, also available with powdercoating or painting in any colour.
- Available for indoor-(IP20) and outdoorapplications(IP65).
Choose between three different metal case versions.
- 100mm LED-Digits with seven-segment-technology with high contrast and sharp outline. Reading distance 40m.



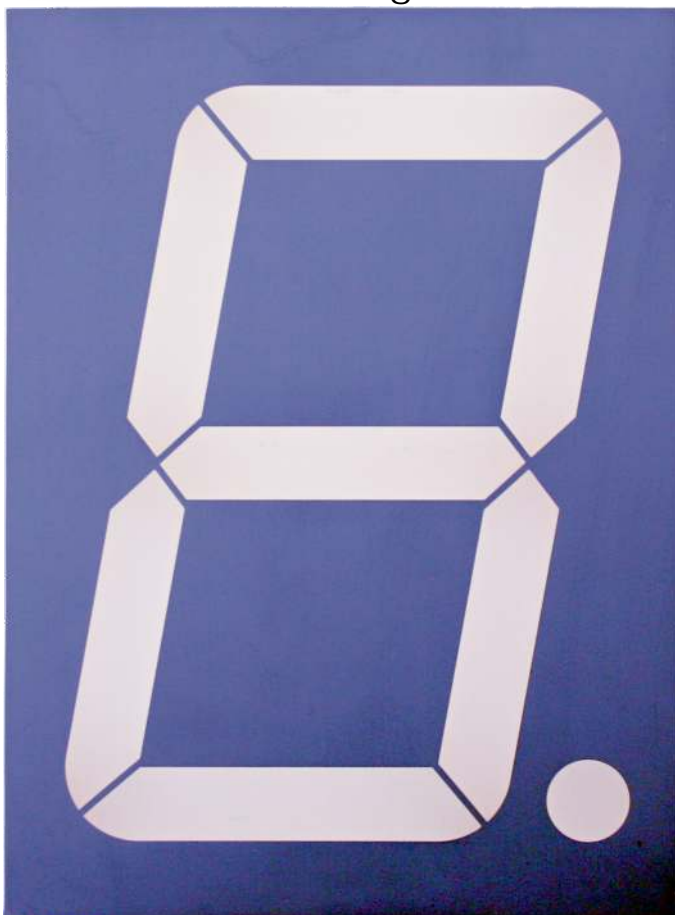
ProLine, IP65
3-line Version, Standard-Case



BasicLineS, IP65
3-line Version, Standard-Case

100mm LED-Digit

Shown in
real size



- Easy installation and configuration.
- Display-parameter-setting with HvG **easyControl** - Software
(free download from www.hvg.me).

Technical-Data

	BasicLine/BasicLineS	ProLine
Display-Type	LED, red	LED, red
Digit Height	100mm	100mm
Electrical Connection	230V, 50Hz int. supply	230V, 50Hz int. supply
Power Consumption typ.	appr. 16 W	appr. 16 W
CE-Conformity	•	•
Displayable Values		
Power Output	•	•
Total Energy	•	•
CO ₂ -Avoided	•	•
(further values upon request)	•	•
Interfaces		
RS 232	•	•
RS 485	•	•
So (Pulse Input)	•	•
Ethernet/LAN	optional	optional
Wireless (433MHz)	optional	optional
Case Material	Aluminium/ Plastic	Aluminium/ Plastic
Protection Class	IP20/65 <small>Indoor-Use/ Outdoor-Use</small>	IP65 <small>Outdoor-Use</small>
incl. Frontlayout	•	•
Dimensions [mm]		
2-lines Standard-Case	815x515x100/55	876x576x100
2-lines XL-Case	1000x700x100/55	1000x700x100
3-lines Standard-Case	815x707x100/55	876x768x100
3-lines XL-Case	1000x800x100/55	1000x800x100

Sales:

HvG[®]
Hard & Software
Engineering